

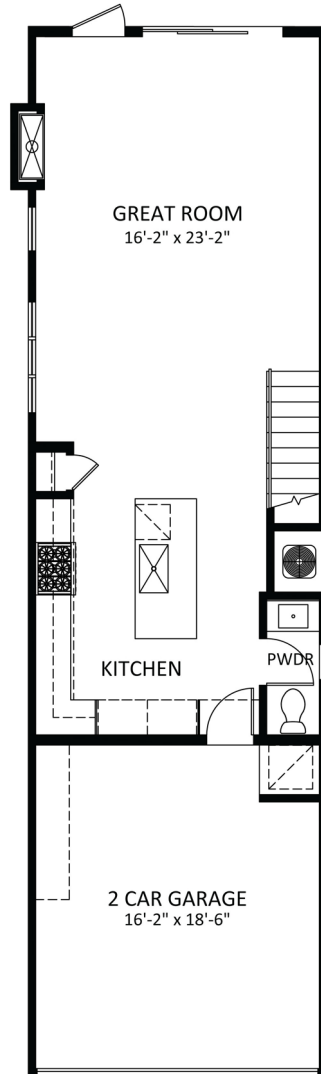


The Camelia Collection

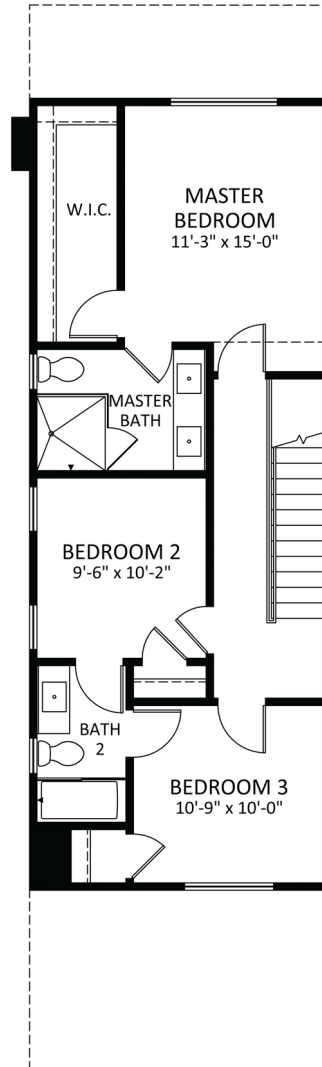
1,463 SQ. FT.

3 BEDS, 3 BATHS

DETACHED SINGLE FAMILY HOMES



First level



Second level

TRADEMARK / BY THOMAS JAMES HOMES

Los Angeles | Silicon Valley | Pacific Northwest

26880 Aliso Viejo Parkway, Suite 100, Aliso Viejo, CA 92656 | (877) 381-4092

TrademarkByTJH.com | @TrademarkByTJH

These features are applicable only to Trademark by Thomas James Homes. Detailed specifications, finishes and fixtures are subject to change, on homes prior to sale, at any time without notice or obligation. Square footages and lot dimensions are approximate and may vary in construction and depending on the standard of measurement used, engineering and municipal requirements, or other site-specific conditions. Room size, walls, windows, doors, porches and balconies vary per home elevation and location. Not an offer or solicitation to sell real property. Thomas James Homes is a registered trademark of Thomas James Homes, LLC. ©2018 Thomas James Homes. All rights reserved. CA DRE License #02057367

